

DuPont Coverall - Style 100-Z1

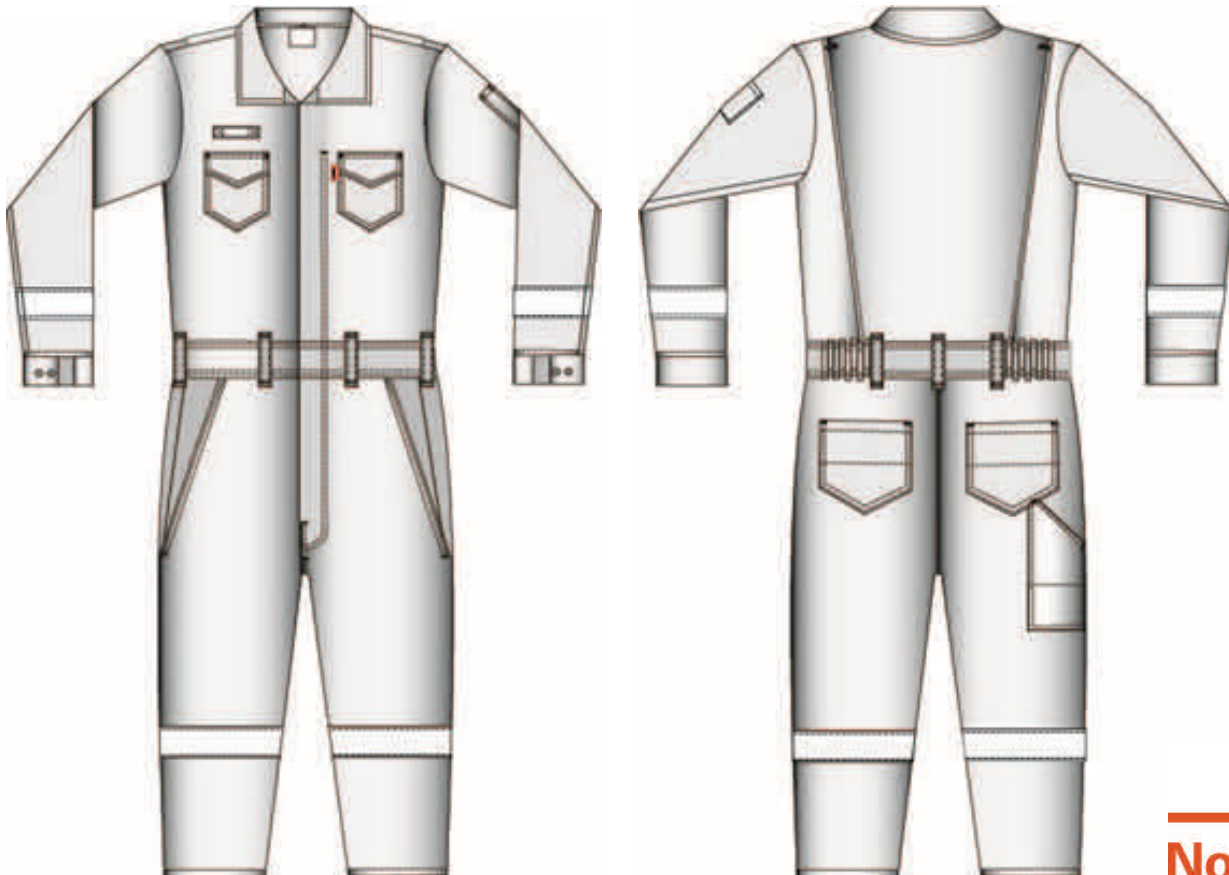
Garment Features

- Two rear reinforced patch pockets, left with snap closure
- Two lower reinforced front slash pockets with pass-thru and snaps
- Tool pocket on right leg
- Two breast pockets with flaps, zipper and snap closure
- Pen pocket on left sleeve
- 2" silver reflective tape on sleeves and legs, set on with two rows of stitching
- Gas detector loop above right chest
- Belt loops on waistband
- Action Back
- Zipper with brass teeth and zipper band made of DuPont™ Nomex®
- All sewing thread made of DuPont™ Nomex®
- Certified according to NFPA 2112, 2012 edition

Available sizes: 32 – 66 in even steps

Available fabrics:

- Nomex® Comfort 6.0 oz: Navy Blue
-



Nomex.